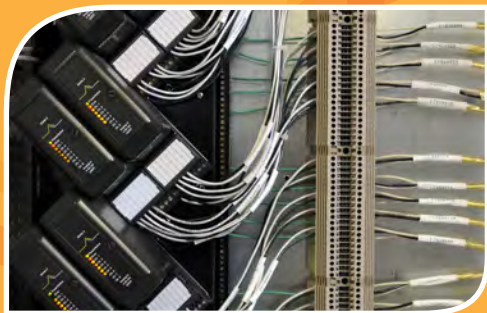




PERRY  
TECHNICAL  
INSTITUTE

# IN

## instrumentation & industrial automation technology



## 2 year program

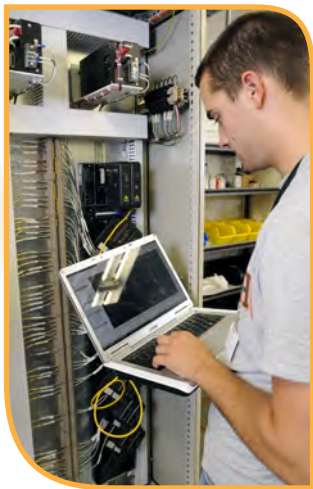
For information regarding graduation and placement rates, program costs and other information, please visit [http://www.perrytech.edu/doc/gainful\\_employment.pdf](http://www.perrytech.edu/doc/gainful_employment.pdf).

# instrumentation

Instrumentation refers to the behind-the-scenes process of how products are made, from the raw material stage to something we use and consume every day. All automated systems require instruments to control and monitor what is happening throughout each step of the process without the intervention of humans. Instrument technicians install, maintain, calibrate, program and replace the control and monitoring equipment used in automation. Instrumentation is an extremely varied field that encompasses industries from petrochemical and power generation to packaging and food processing.

Industry depends upon automation to insure that goods of all kinds are produced uniformly, safely, efficiently and cost effectively. If you're a problem-solver and enjoy using numbers to come up with solutions, the field of instrumentation offers variety, job security, stable employment and excellent salaries.

Instrument technicians can use their skills anywhere in the world. Salaries vary by geographic region, type of work and degree of responsibility. Instrument techs are needed in industries such as silicon/microchip manufacturing, systems integration, pharmaceuticals, design and engineering, refining and pulp and paper production.



2011 W. Washington Ave. • Yakima, WA 98903  
(509) 453-0374 • (888) 528-8586 • [perrytech.edu](http://perrytech.edu)

Perry Technical Institute does not discriminate on the basis of race, color, national origin, sex, sexual orientation, disability, or age in its programs and activities.